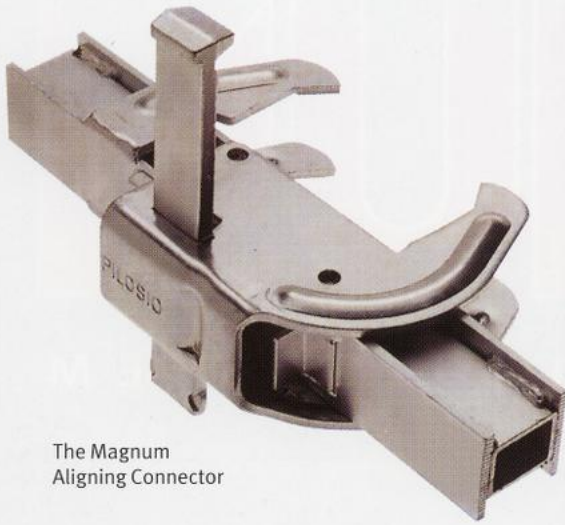


# MAGNUM

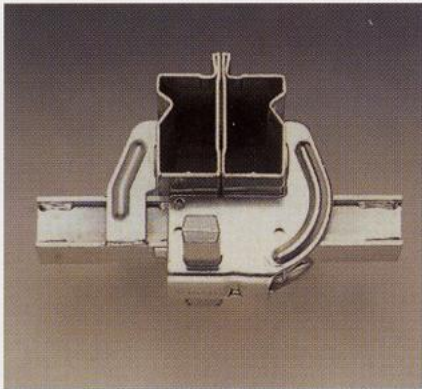
LARGE PANEL FORMING SYSTEM



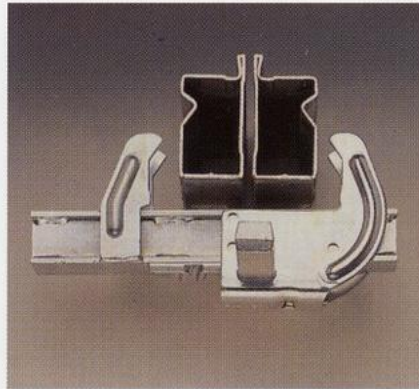
**WACO**<sup>®</sup>  
Scaffolding & Equipment



The Magnum Aligning Connector



Magnum aligning connector erected

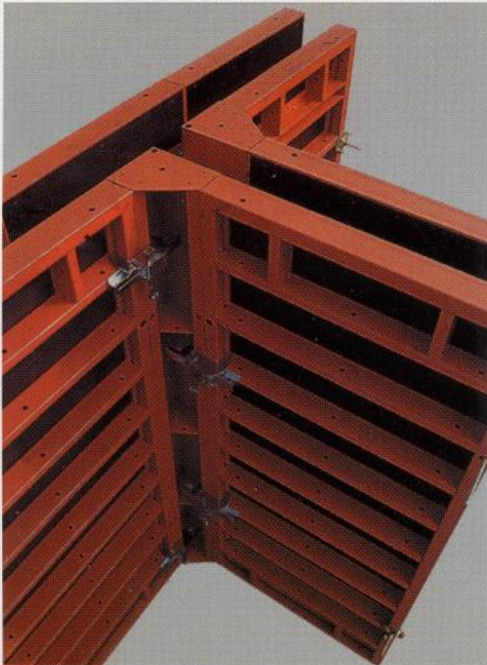


Magnum aligning connector stripped

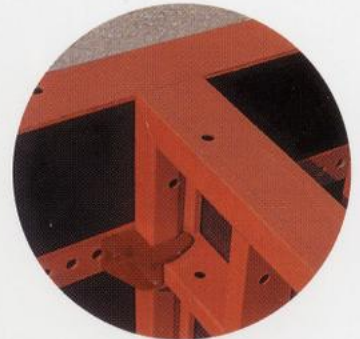


Just one operation connects and aligns panels.

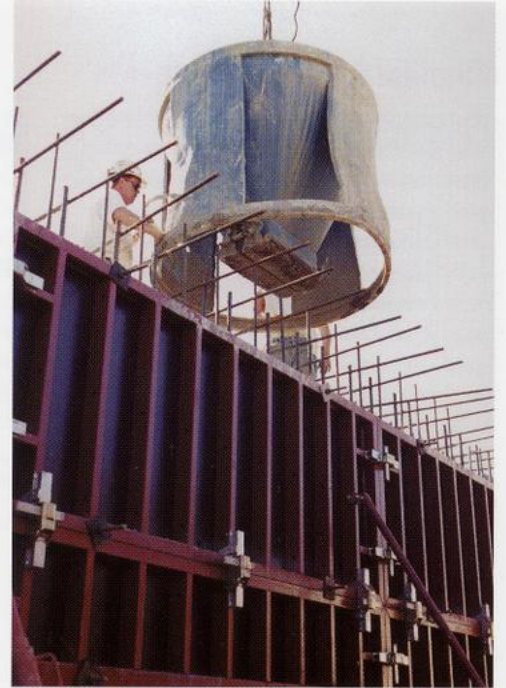
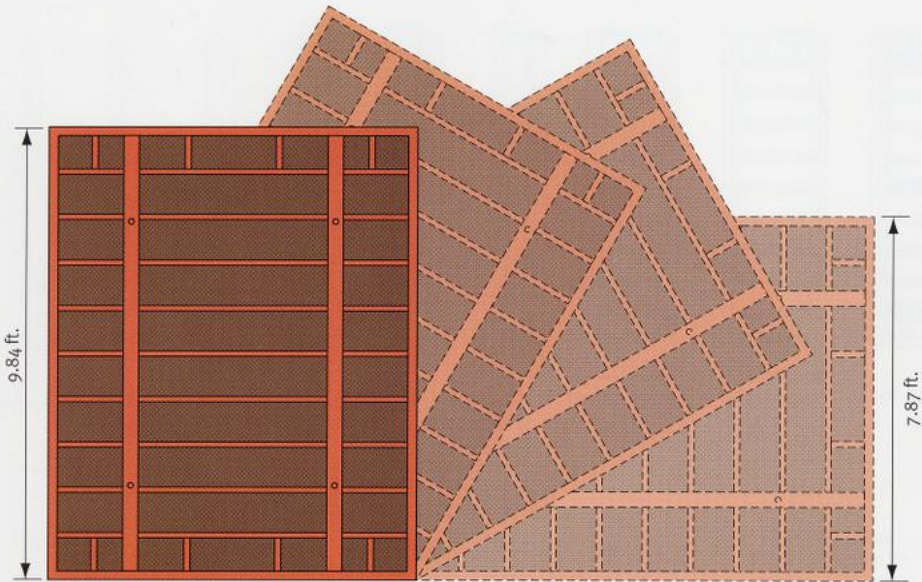
"T" junction assembly



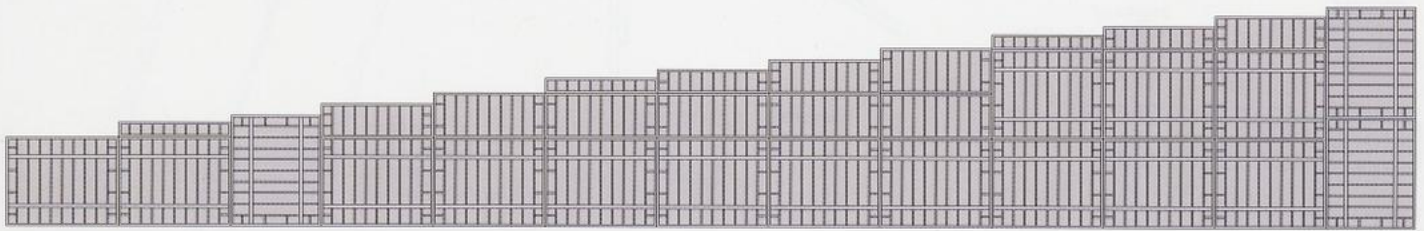
Corners made using the adjustable panel



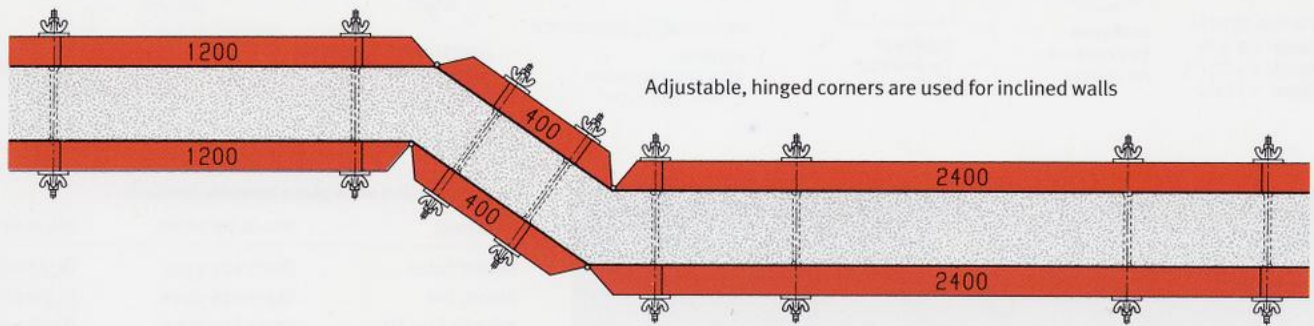
Detail of connection of panel and outer corner



A large surface base panel (8.6 sq. yards erected) can be set for either horizontal or vertical use.



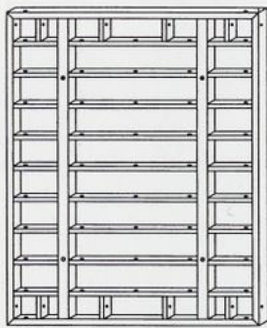
Magnum panels are designed with just 2 ties in height, one every 19.3 sq. ft. of surface, to reduce the number of pieces and thereby shorten erection and dismantling time. The formwork can create any casting height, in 1' increments, using just 5 basic system element.



*“The Magnum system was easy to erect and allowed us to pour more walls in less time.”*

— Lee McAllister  
S. I. McAllister,  
Contractors

# Magnum System Components



**21533241**  
240x300 Panel  
7'10 1/2" x 9'10 1/8"



**21533120**  
120x300 Panel  
3'11 1/4" x 9'10 1/8"



**21533101**  
Adjustable Panel  
3'3 3/8" x  
9'10 1/8"



**21533090**  
90x300 Panel  
2'11 7/16" x  
9'10 1/8"



**21533060**  
60x300 Panel  
1'11 5/8" x  
9'10 1/8"



**A 21533356** (30+30)x300 Inner corner panel, (11 3/4"+11 3/4") x 9'10 1/8"



**B 21533360** (30+30)x300 Inner corner panel with hinge



**C 21533370** (30+30)x300 Outer corner panel with hinge



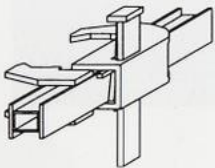
**D 21534040** 40x300 Infill panel, 1'3 3/4" x 9'10 1/8"



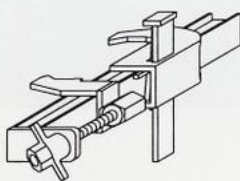
**E 21534000** 5x300 Infill bar, 1 3/32" x 9'10 1/8"



**F 21534010** 10x300 Infill bar, 3 1/16" x 9'10 1/8"

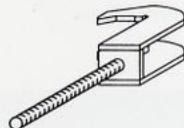


**21535010**  
Magnum Aligning  
Connector

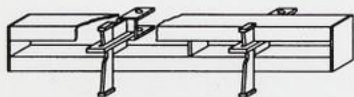


**21535020**  
Magnum Adjustable  
Aligning Connector

**21535040**  
Connecting Device  
for outer corners



**21591005**  
Working Bracket



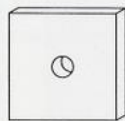
**21535030** Magnum Aligning Device



S34 Tie-Rod, 23/32" Ø  
**21585037** 1'2 3/4" L  
**21585075** 2'5 17/32" L  
**21585100** 3'3 3/8" L



**21585900**  
S34 Wing nut  
for Tie-Rod



**21585930**  
Tie-Rod Plate  
4 3/4" x 4 3/4" x 5/8"



**21591210**  
Fixed Prop Arm  
3'7 5/16"



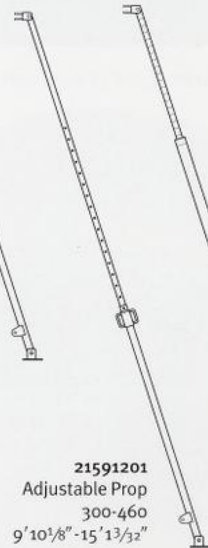
**21591205**  
Adjustable Prop Arm  
3'7 5/16" to 4'11 1/16"



**21537100**  
Crane hook



**21591200**  
Adjustable Prop  
210-360  
6'10 1/16" - 11'9 23/32"



**21591201**  
Adjustable Prop  
300-460  
9'10 1/8" - 15'1 3/32"

**21591300**  
Adjustable Prop  
530-700  
17'4 23/32" - 22'11 19/32"



For information or to place an order contact:

Branches	Phone Numbers	Fax Numbers
Dealer Sales	(800) 321-3150	(216) 267-9562
Akron, OH	(800) 676-9226	(330) 785-3921
Atlantic City, NJ	(800) 273-1056	(609) 646-7808
Canton, OH	(800) 927-9226	(330) 497-0572
Carson, CA	(800) 251-4503	(310) 538-1003
Charleston, WV	(800) 678-9226	(304) 744-0349
Cleveland, OH	(800) 927-7502	(216) 351-9009
Columbus, OH	(800) 736-9226	(614) 486-7443
Indianapolis, IN	(888) 284-8744	(317) 951-8715
Minneapolis, MN	(800) 347-9356	(651) 697-0254
Phoenix, AZ	(888) 345-9226	(480) 507-8844
Pittsburgh, PA	(800) 422-9284	(412) 823-4840
San Diego, CA	(800) 734-9226	(619) 566-5780
San Diego Shipyard	(888) 472-2336	(619) 233-0802
Seattle, WA	(866) 642-8216	(206) 935-1702
Youngstown, OH	(888) 415-9737	(330) 792-2265

**WACO**  
Scaffolding & Equipment

Corporate Office  
4545 Spring Road  
P.O. Box 318028  
Cleveland, Ohio 44131  
**800-321-3150**  
www.wacoscaf.com



Exclusive U.S. Distributor of  
Pilosio Forming Systems  
**PILOSIO**  
www.pilosio.com

©2001 Waco Scaffolding and Equipment. All Rights Reserved. Rev. 5.01  
Waco is a registered trademark of Waco International Corporation.