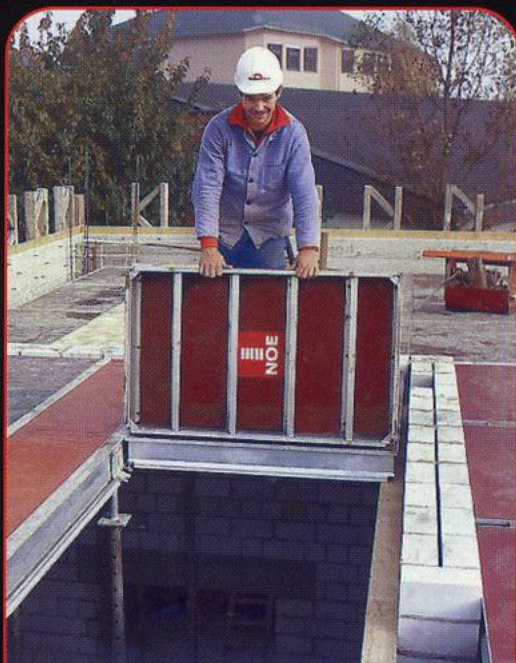
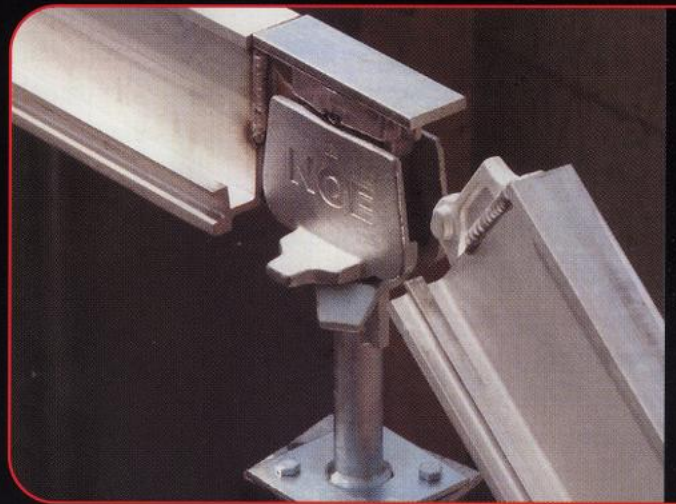
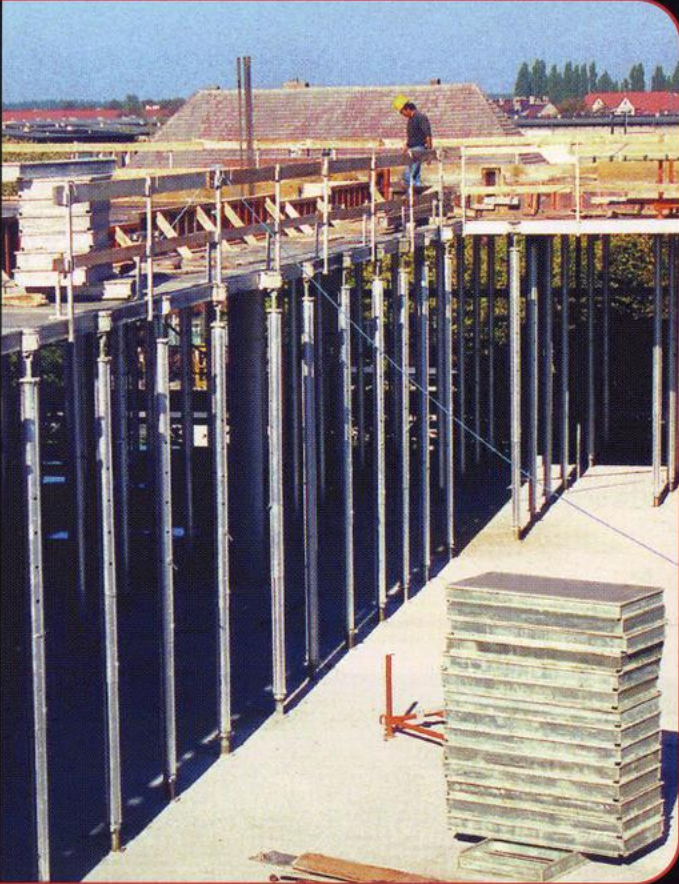
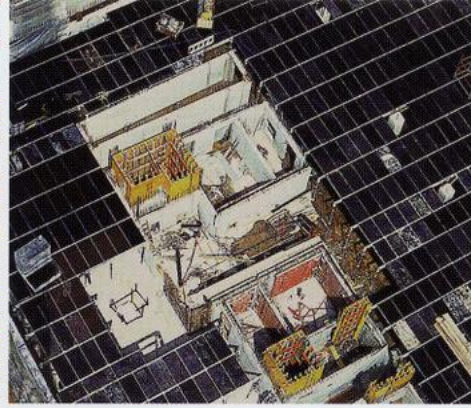


# FORMDECK

## Panelized Shoring System



**WACO**<sup>®</sup>  
Scaffolding & Equipment



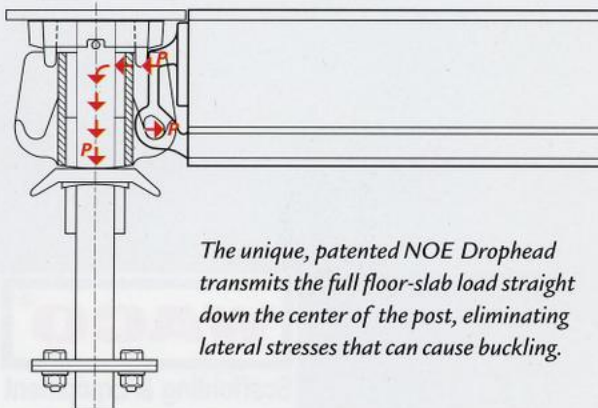
## FORMDECK

**Unique innovations are the core of a truly superior deck forming system.**

**FORMDECK FROM WACO** is an extremely simple system, built around just three basic components — the drop-heads, the girders and the panels.

The patented NOE Drophead (Pat.No. 3316557) has a unique advantage. Apart from its enormous load-bearing capacity of up to 6.0 kips, it transmits the full floor-slab load centrally, *i.e.* vertically onto the props — even when the props stand close to a wall and carry a girder on only one side. Lateral bending forces are nonexistent, eliminating any risk of buckling.

Any post shore of approved construction can be used. The NOE Drophead makes it possible to lower and remove the formwork panels as soon as the concrete has set. The floor slab itself remains 100% supported until the concrete has finally hardened, while the formwork panels are used again elsewhere.

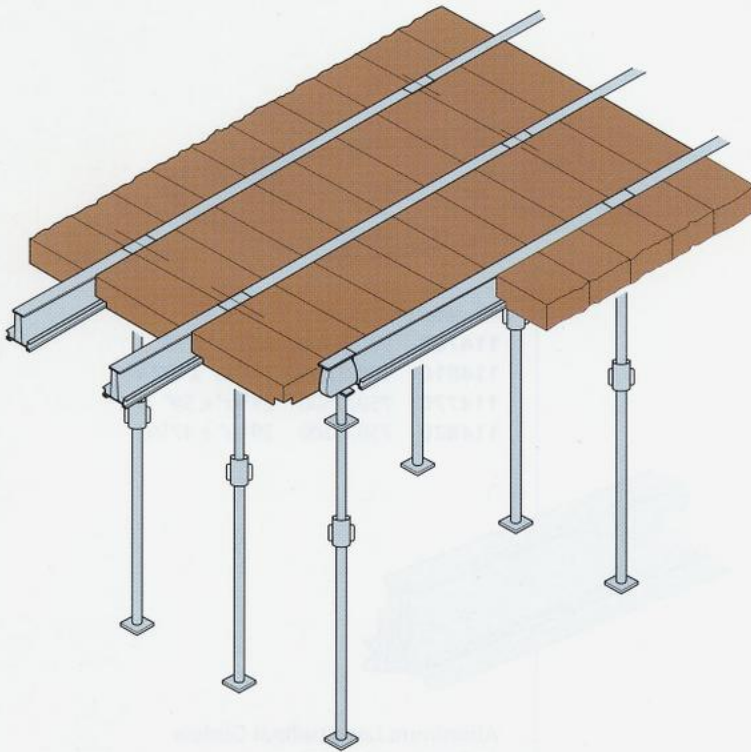


*The unique, patented NOE Drophead transmits the full floor-slab load straight down the center of the post, eliminating lateral stresses that can cause buckling.*

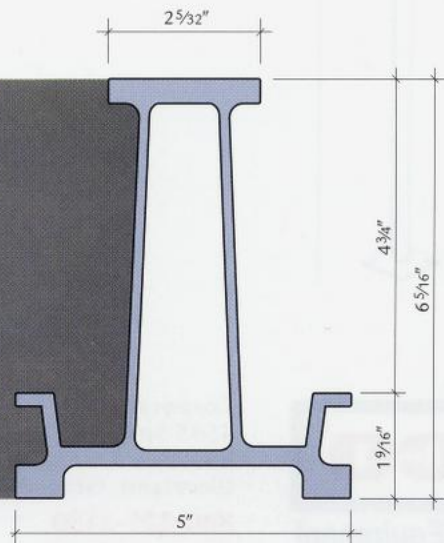
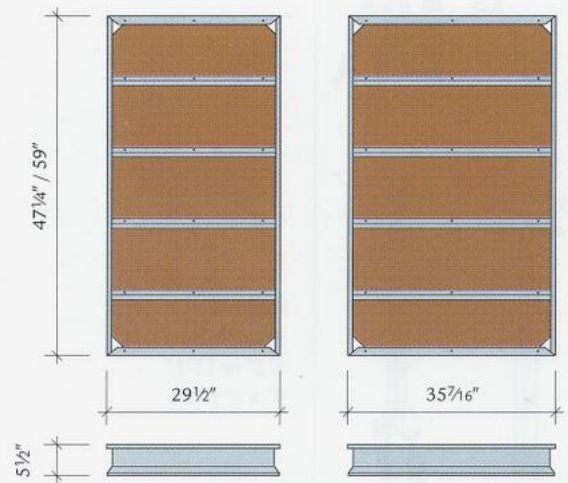
The girders, although light in weight, are so strong that they can support slabs up to 47½" thick. They have a special tapered groove running on either side, to provide an absolutely firm and perfectly secure connection between the girder and the panels.



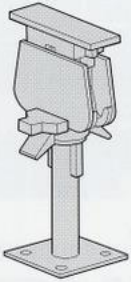
*The NOE Drophead makes it possible to lower and remove the formwork panels as soon as the concrete has set. The floor slab remains completely supported as the concrete fully hardened, while the formwork panels can be put to use again elsewhere.*



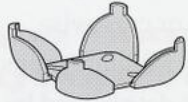
Formdeck panels have a continuous supporting groove running around the entire perimeter of their aluminum frames. They can be hung between the girders, lengthwise or crosswise, independent of any hole pattern. Minimal props are required and their position is determined by the system. Formdeck is approved for use on any construction site.



# Formdeck System Components



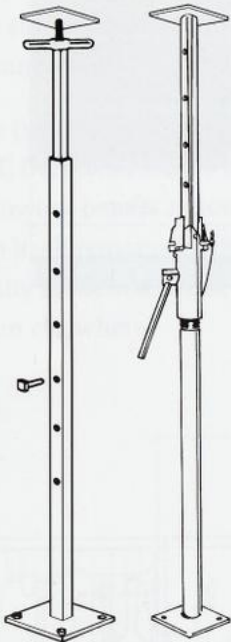
**112500**  
Drophead  
Galvanized



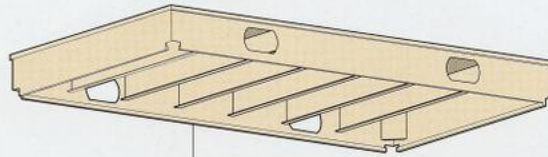
**112580**  
Crosshead Plate  
Galvanized



**900070**  
Folding Tripod  
Galvanized,  
with clamping lock

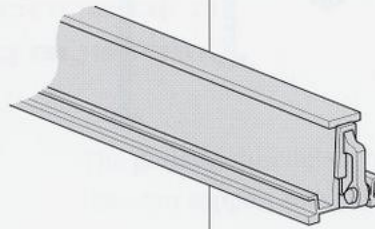


**070167**  
Post Shore  
6'2" to 11'1"  
6" x 6" plate



### Aluminum Panels

<b>114760</b>	900/1500	35 <sup>7</sup> / <sub>16</sub> " x 59"
<b>114810</b>	900/1200	35 <sup>7</sup> / <sub>16</sub> " x 47 <sup>1</sup> / <sub>4</sub> "
<b>114770</b>	750/1500	29 <sup>1</sup> / <sub>2</sub> " x 59"
<b>114820</b>	750/1200	29 <sup>1</sup> / <sub>2</sub> " x 47 <sup>1</sup> / <sub>4</sub> "



### Aluminum Longitudinal Girders

<b>113632</b>	150	59"
<b>113634</b>	210	82 <sup>2</sup> / <sub>3</sub> "
<b>113600</b>	210	82 <sup>2</sup> / <sub>3</sub> " Painted

## For information or to place an order contact:

Branches	Phone Numbers	Fax Numbers
Dealer Sales	(800) 321-3150	(216) 267-9562
Akron, OH	(800) 676-9226	(330) 785-3921
Atlantic City, NJ	(800) 273-1056	(609) 646-7808
Canton, OH	(800) 927-9226	(330) 497-0572
Carson, CA	(800) 251-4503	(310) 538-1003
Charleston, WV	(800) 678-9226	(304) 744-0349
Cincinnati, OH	(513) 829-4757	(513) 829-4749
Cleveland, OH	(800) 927-7502	(216) 351-9009
Columbus, OH	(800) 736-9226	(614) 922-0401
Indianapolis, IN	(888) 284-8744	(317) 951-8715
Minneapolis, MN	(800) 347-9356	(651) 697-0254
Phoenix, AZ	(888) 345-9226	(480) 507-8844
Pittsburgh, PA	(800) 422-9284	(412) 823-4840
San Diego, CA	(800) 734-9226	(619) 566-5780
San Diego Shipyard	(888) 472-2336	(619) 233-0802
Seattle, WA	(866) 642-8216	(206) 935-1702
Youngstown, OH	(888) 415-9737	(330) 792-2265



**Scaffolding & Equipment**

RENTALS • SALES • ERECTION

Corporate Office  
4545 Spring Road  
P.O. Box 318028  
Cleveland, Ohio 44131

**800-321-3150**

Visit Our Web Site

[www.wacoscaf.com](http://www.wacoscaf.com)



Exclusive U.S. Distributor of  
NOE Formdeck Systems

